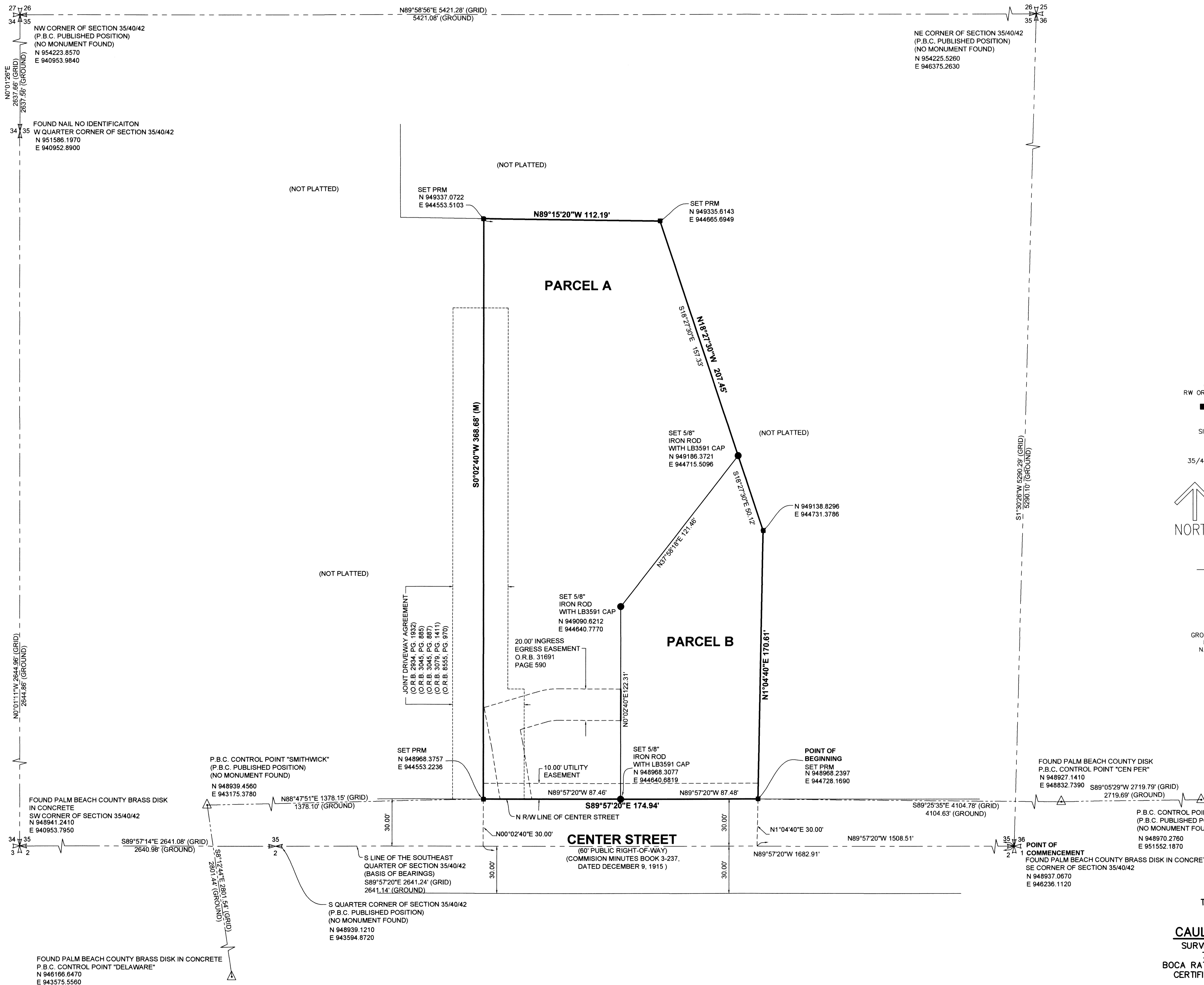


# GETZ SUBDIVISION

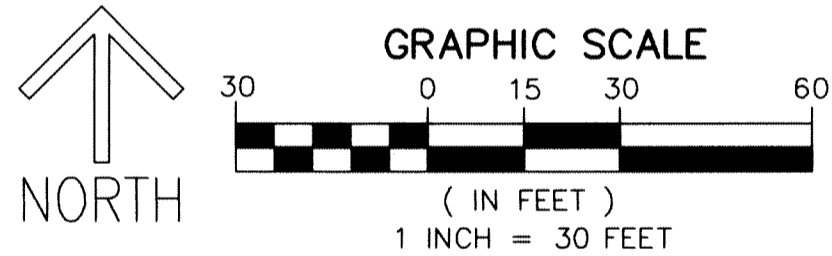
A PORTION OF THE SOUTHEAST QUARTER (SE 1/4) OF SECTION 35, TOWNSHIP 40 SOUTH, RANGE 42 EAST, PALM BEACH COUNTY, FLORIDA

182

SHEET 2 OF 2



- LEGEND/ABBREVIATIONS**
- E - EASTING (WHEN USED WITH COORDINATES)
  - N - NORTHING (WHEN USED WITH COORDINATES)
  - O.R.B. - OFFICIAL RECORD BOOK
  - RW OR R/W - RIGHT-OF-WAY
  - UE - UTILITY EASEMENT
  - PRM - DENOTES SET PERMANENT REFERENCE MONUMENT 4" x 4" x 24" CONCRETE MONUMENT WITH ALUMINUM DISK STAMPED "C&W PRM LB3591"
  - SIRC - DENOTES SET 5/8" IRON ROD WITH CAP STAMPED "C&W LB3591"
  - △ - DENOTES HORIZONTAL CONTROL POINT
- 35/40/42 - SECTION 35, TOWNSHIP 40 SOUTH, RANGE 42 EAST



**NOTES**  
**COORDINATES, BEARINGS AND DISTANCES**

COORDINATES SHOWN ARE GRID  
DATUM = NAD 83 (90 ADJUSTMENT)  
ZONE = FLORIDA EAST  
LINEAR UNIT = US SURVEY FEET  
COORDINATE SYSTEM 1983 STATE PLANE  
TRANSVERSE MERCATOR PROJECTION  
ALL DISTANCES ARE GROUND  
SCALE FACTOR = 1.000035893  
GROUND DISTANCE X SCALE FACTOR = GRID DISTANCE  
BEARINGS AS SHOWN HEREON ARE GRID DATUM,  
NAD 83 (1990 ADJUSTMENT), FLORIDA EAST ZONE.

THIS INSTRUMENT PREPARED BY  
DAVID P. LINDLEY  
OF  
**CAULFIELD and WHEELER, INC.**  
SURVEYORS - ENGINEERS - PLANNERS  
7900 GLADES ROAD, SUITE 100  
BOCA RATON, FLORIDA 33434 - (561)392-1991  
CERTIFICATE OF AUTHORIZATION NO. LB3591